

hindware™
smart appliances

Water Heaters

Technology Partner, Groupe Atlantic France,
Europe's leading brand in water heating solutions.

World-class Water Heaters,
Proudly Indian, Made for You.



atlantic



hindware™
smart appliances



Innovations that
turns showers into

*blissful
escapes*

Hindware Atlantic Water Heaters

DOWNLOAD OUR MOBILE APP



BRAND AWARDS



WhatsApp Support
+91-964250004

hindware CARE
HELPLINE 1800-103-3300
(TOLL FREE) +91-8069166666
Open : 8 am to 8 pm, all 7 days
✉ : wecare@hindware.co.in

HINTASTICA PRIVATE LIMITED : #301-302, 3rd Floor, BPTP Park Centra, Sector-30, Gurugram-122001, Haryana, India.
0124-4779200 | www.hindwareappliances.com | Follow us on: [T](#) [I](#) [Y](#) [I](#) [I](#) [F](#) /hindwareappliances

Disclaimer: Due to continuous technological upgradation Hintastica Private Limited reserves every right to change the specifications/brief description/pictorial representation, without prior notice.
*As per tests conducted by Intertek.



Actual product colour/features/technology may vary model-wise. Requires internet connection.
Google is a trademark of Google LLC, Alexa and all related logos are trademarks of Amazon.com, Inc. or its affiliates.



Hintastica Private Limited (HPL) is India's leading provider of Consumer Water & Electrical Heating solutions. It is a joint venture of Hindware Home Innovation Limited & Groupe Atlantic of France. Groupe Atlantic is a 2.7 billion Euro company with over 50 years in water heaters and heating solutions & Hindware Home Innovation Limited (HHIL) is the fastest-growing player in Consumer Appliances and the leader in the Building Product segment in India.

The Joint Venture company HPL, aims at creating a strong customer base by offering innovative products to Indian consumers as well as to neighbouring nations in the SAARC region. HPL leverages Groupe Atlantic's proven prowess in manufacturing and R&D with HHIL's vast marketing and distribution capabilities to deliver to the consumer a range of high-quality products and accessories; all under the brand name 'Hindware Smart Appliances'. The company has set-up a state-of-the-art manufacturing plant in Telangana. The project is in line with the Government of India's 'Make in India' initiative and all components are sourced from within India. The plant with a production capacity of 6 lac units annually is built on a plot of 5.7 acres.

At HPL we aim to offer customer delight by delivering convenience, ease of usage with the best of technology and quality standards.



A RENOWNED FRENCH BRAND WORLDWIDE

Atlantic is a well-established and renowned French brand, an expert in all types of heating systems and home comfort appliances with a worldwide presence. Atlantic was founded in 1968, by Mr. Radat and Mr. Lamoure, in la Roche-sur-Yon, a city from the Vendee region, located on the West coast of France.

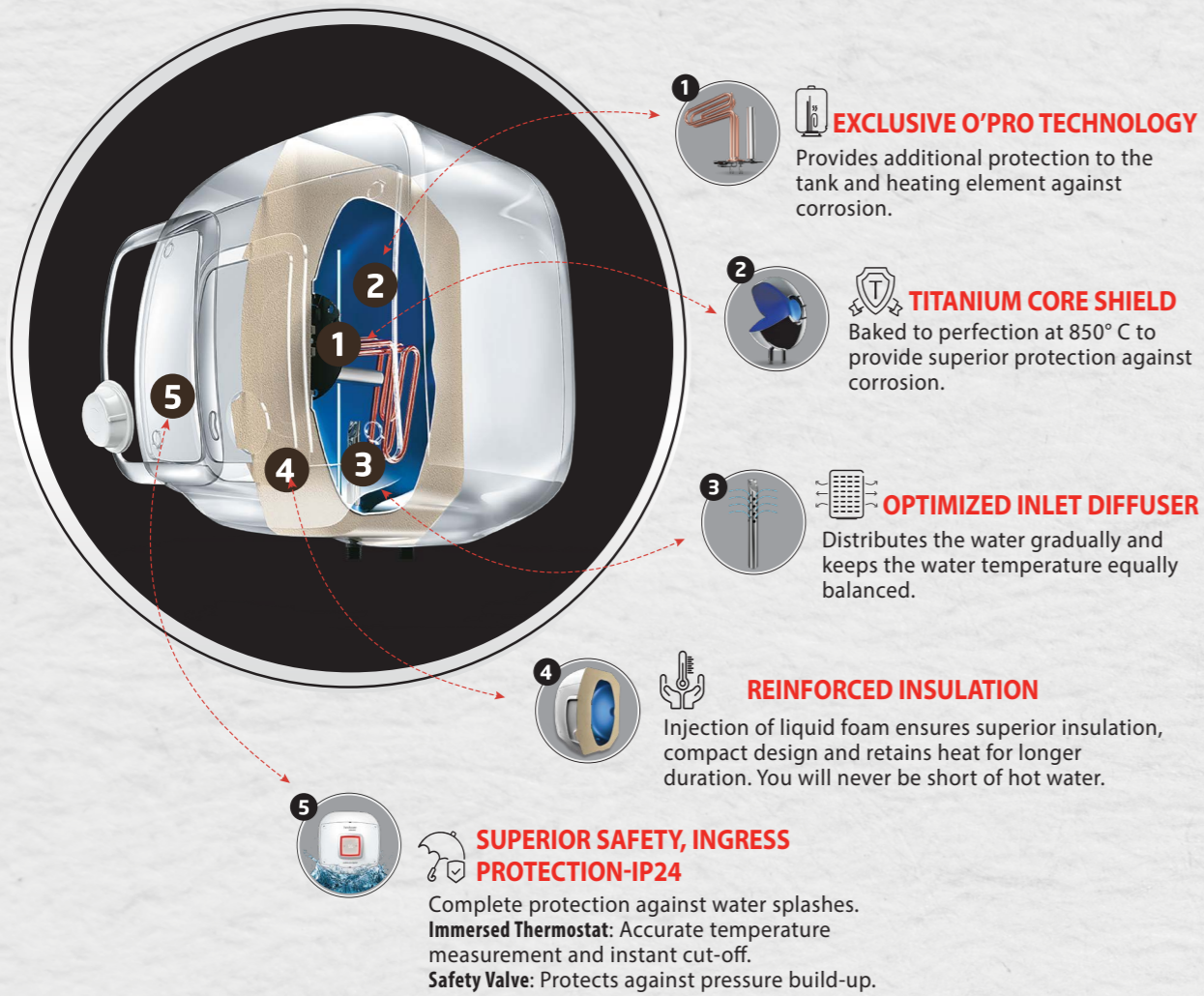
Premium design, constant innovation and cutting-edge technology are the guiding principles at Atlantic. The company has developed a complete range of modern and reliable equipment's such as water heaters, electric heaters, bathroom heaters, solar water heaters, heat pumps. Today, Atlantic is well established in France and over 70 countries across Western and Eastern Europe, Near and Middle East, Africa, South America and even Asia-Pacific, with an ongoing growth and deployment across the world.

Groupe Atlantic controls more than 60 percent of the French Domestic Hot Water (DHW) market, the biggest market for electrical domestic comfort products worldwide. The company has grown in size to employ 13,000 people and generates an annual turnover of 2.7 billion Euro today. A substantial amount of Groupe Atlantic's turnover is committed to the development of new products, which is a reflection of the organization's dedication to innovation, Research & Development.

With more than 3 million water heaters manufactured every year, Group Atlantic provides an extremely large range of storage DHW tanks from 10L to 3000L capacity. The group has built a strong brand portfolio of thermal comfort solutions since its creation, including domestic and commercial water heaters, renewable energy heaters and water heaters, room and bathroom heaters. Worldwide, the Groupe owns 17 brands, 6 dedicated water heater manufacturing plants, 31 industrial sites, 4 commercial operations across 4 continents and many more.

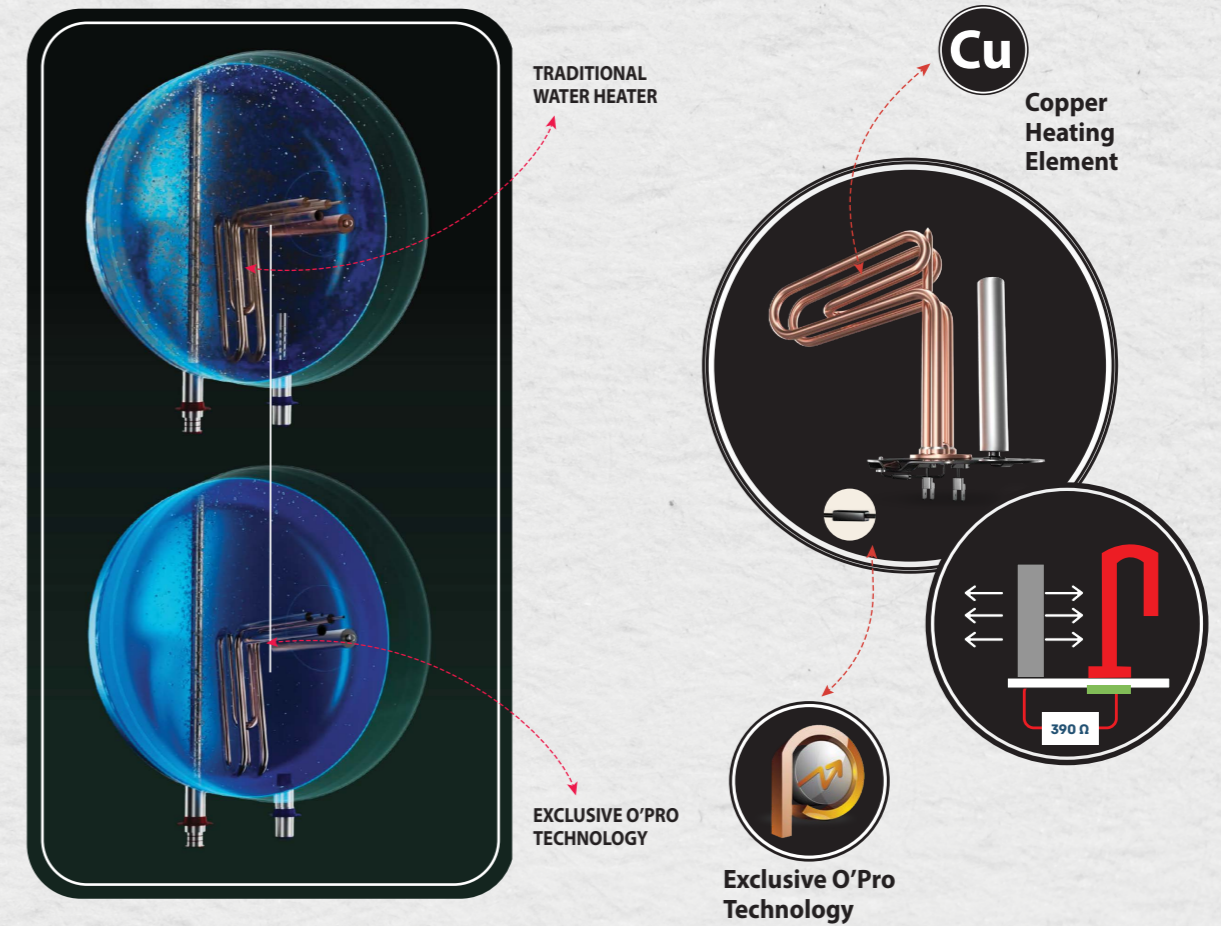


Five Intelligent Reasons for Advanced Thermal Comfort



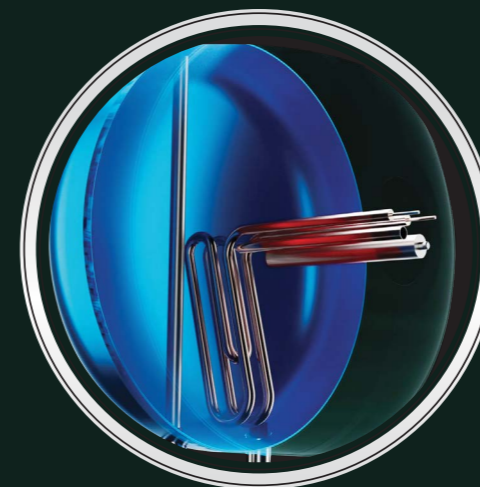
Powered by Exclusive O'Pro Technology

- The Exclusive O'Pro Technology provides additional protection to the tank and heating element against corrosion.
- With the use of an Ohmic resistor, a small resistance is created of 390 Ω between the Magnesium anode and the Heating Element.
As a result of the Ohmic resistance, the life of the water tank is increased by up to 50% and you get fresh, corrosion free hot water for your family, for a longer duration.



Robust, Corrosion Resistant Tank

Titanium core glassline shield



Egypt's Finest Copper Heating Element with Magnesium Anode

Ensures long lasting performance of element as well as Tank

STORAGE WATER HEATERS

Modern Masterpieces for the Progressive you

Enjoy a soothing hot water bath with our cutting-edge storage water heaters. Not only it's super convenient and easy to use but also it serves individual needs with tech-enabled features.

Available in multiple shapes and sizes to fit into your required spaces by enhancing the look of your washroom.

Capacities : 10L-50L



Storage Water Heaters

**ONDEO EVO I-PRO/
ONDEO EVO DIGITAL #**
Capacity: 10L/ 15L/ 25L

YOUR VOICE OUR COMMAND

Get ready to indulge in a blissful bath with IOT smart water heater.

Digital display with colour changing LED

Temperature in degree celsius



Ready to Use



Heating ON

25% Faster Heating*



**IOT
ENABLED**

works with **alexa**

works with **Ok Google**

- Shower Ready Mode**
Displays Time To Heat.
- Power Consumption**
Keep a check on the energy consumption
- Pre-set Modes**
Eco / Comfort / Power
3 pre-set temperature modes.
- Daily Scheduler**
Set up to 14 schedules for every day of the week.
- Auto Fresh Cycle**
Maintains hygiene inside the tank & increases life of the water heater.
- Intelligent Geo-Fencing**
Lets the water heater auto On/Off based on your location.

Download Mobile App



Requires internet connection.
Google is a trademark of Google LLC.
Alexa and all related logos are trademarks of Amazon.com, Inc. or its affiliates.

WARRANTY

7 YEARS TANK | **4 YEARS HEATING ELEMENT** | **2 YEARS COMPREHENSIVE**

* 15L & 25L products have 2.5 kW heating elements vs 2 kW element in most competing models hence consumers get 25% faster heating.
#Ondeo Evo Digital is available without IOT technology.

ALIVIO

Capacity: 10L/ 15L/ 25L

Powered by **Intelli 5**

Exclusive O'Pro Technology
Protects against corrosion for enhanced life

Optimized Inlet Diffuser
Faster heating

Superior Safety
Protects against electric shocks & auto cut-off when dry and overheated

Titanium Core Shield
For hygienic fresh hot water

Reinforced Insulation
Retains heat for longer hours

WARRANTY

7 YEARS TANK | **4 YEARS HEATING ELEMENT** | **2 YEARS COMPREHENSIVE**



ADMIRO **NEW**

Capacity: 10L/ 15L/ 25L

Glassline Tank
Enhances the life of the water heater

Copper Heating Element
Efficient heat conduction

Perfect for High-Rise Residences
8 Bar working pressure

Robust Construction
Engineered to be rust-proof

Superior Safety
Protects against electric shocks & auto cut-off when dry and overheated



WARRANTY

7 YEARS TANK | **3 YEARS HEATING ELEMENT** | **2 YEARS COMPREHENSIVE**

Storage Water Heaters

FRAISO DIGI **NEW**

Capacity: 10L/ 15L/ 25L

-  **Glassline Tank**
Enhances the life of the water heater
-  **Copper Heating Element**
Efficient heat conduction
-  **Perfect for High-Rise Residences**
8 Bar working pressure
-  **Robust Construction**
Engineered to be rust-proof
-  **Superior Safety**
Protects against electric shocks & auto cut-off when dry and overheated



WARRANTY



NITRO

Capacity: 15L/ 25L

-  **Glassline Tank**
Enhances the life of the water heater
-  **Copper Heating Element**
Efficient heat conduction
-  **Perfect for High-Rise Residences**
8 Bar working pressure
-  **Robust Construction**
Engineered to be rust-proof
-  **Superior Safety**
Protects against electric shocks & auto cut-off when dry and overheated







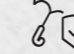
WARRANTY



Storage Water Heaters

AMOUR NEO

Capacity: 10L/ 15L/ 25L

-  **Glass Coat Pro+ Tank**
Enhances the life of the water heater
-  **Optimized Inlet Diffuser**
Faster heating
-  **Perfect for High-Rise Residences**
8 Bar working pressure
-  **Reinforced Insulation**
Retains heat for longer hours
-  **Superior Safety**
Protects against electric shocks & auto cut-off when dry and overheated



WARRANTY



ADMIRO ECO **NEW**

Capacity: 10L/ 15L/ 25L

-  **Glassline Tank**
Enhances the life of the water heater
-  **Copper Heating Element**
Efficient heat conduction
-  **Perfect for High-Rise Residences**
8 Bar working pressure
-  **Robust Construction**
Engineered to be rust-proof
-  **Superior Safety**
Protects against electric shocks & auto cut-off when dry and overheated



WARRANTY



Storage Water Heaters

ELICIO NEO

Capacity: 35L/ 50L



Glass coat Pro+ Tank
Enhances the life of the water heater



Optimized Inlet Diffuser
Faster heating



Reinforced Insulation
Retains heat for longer hours



Perfect for High-Rise Residences
8 Bar working pressure



Superior Safety
Protects against electric shocks & auto cut-off when dry and overheated

Metal Body



EXCLUSIVE O'PRO
TECHNOLOGY
Enhanced Protection
Against Corrosion



WARRANTY

7 YEARS TANK

3 YEARS HEATING ELEMENT

2 YEARS COMPREHENSIVE

Storage Water Heaters

EVANO

Capacity: 15L/ 25L/ 50L



Copper Heating Element
Efficient heat conduction



Glassline Tank
Enhances the life of the water heater



Perfect for High-Rise Residences
8 Bar working pressure



Robust Construction
Engineered to be rust-proof



Superior Safety
Protects against electric shocks & auto cut-off when dry and overheated

WARRANTY

7 YEARS TANK

2 YEARS HEATING ELEMENT

2 YEARS COMPREHENSIVE

Available in both side LHS/RHS connection pipe orientation.



EZRO NEO NEW

Capacity: 35L/ 50L



Glass coat Pro+ Tank
Enhances the life of the water heater



Optimized Inlet Diffuser
Faster heating



Robust Construction
Engineered to be rust-proof



Perfect for High-Rise Residences
8 Bar working pressure



Superior Safety
Protects against electric shocks & auto cut-off when dry and overheated

WARRANTY

7 YEARS TANK

2 YEARS HEATING ELEMENT

2 YEARS COMPREHENSIVE



CRISTALLO SLIM

Capacity: 10L/ 15L/ 25L



Copper Heating Element
Efficient heat conduction



Glassline Tank
Enhances the life of the water heater



Perfect for High-Rise Residences
8 Bar working pressure



Robust Construction
Engineered to be rust-proof



Superior Safety
Protects against electric shocks & auto cut-off when dry and overheated

WARRANTY

7 YEARS TANK

2 YEARS HEATING ELEMENT

2 YEARS COMPREHENSIVE

Available in both side LHS/RHS connection pipe orientation.





INSTANT WATER HEATERS

Get swift, instant hot water with aesthetically appealing designs, it's best suited for compact spaces like kitchen, laundry, bathrooms to enhance your experience. Just switch it on and enjoy a pleasing warmth whenever you want.

Capacities : 3L-5.5L



Instant Water Heaters

HELIO

Capacity: 3L

-  **Copper Heating Element**
Efficient heat conduction
-  **Pressure Release Valve**
Protects against pressure build up
-  **Perfect for High-Rise Residences**
6.5 Bar working pressure
-  **i-Thermostat**
Guards against water overheating
-  **Robust Stainless Steel Tank**
Resistant to corrosion & wear
-  **Robust Construction**
Engineered to be rust-proof

WARRANTY



AQUAJoy **NEW**

Capacity: 3L/ 5.5L

-  **Copper Heating Element**
Efficient heat conduction
-  **Pressure Release Valve**
Protects against pressure build up
-  **Perfect for High-Rise Residences**
6.5 Bar working pressure
-  **i-Thermostat**
Guards against water overheating
-  **Robust Stainless Steel Tank**
Resistant to corrosion & wear
-  **Robust Construction**
Engineered to be rust-proof

WARRANTY



Only 3L is ISI Certified

GAS WATER HEATERS



EVETO
Capacity: 6L/min

- Climate Based Optimization**
Adjust heat according to seasonal variations.
- Hassle Free Ignition**
A-grade pulse ignitor and micro-switch
- Suitable for all residences**
Working pressure 0.01 MPa to 0.80 MPa
- Durable HiTech Design**
Rust free SS body with triple burner system
- Superior Safety**
Flame failure protection, anti dry burn protection, overheat protection and child lock

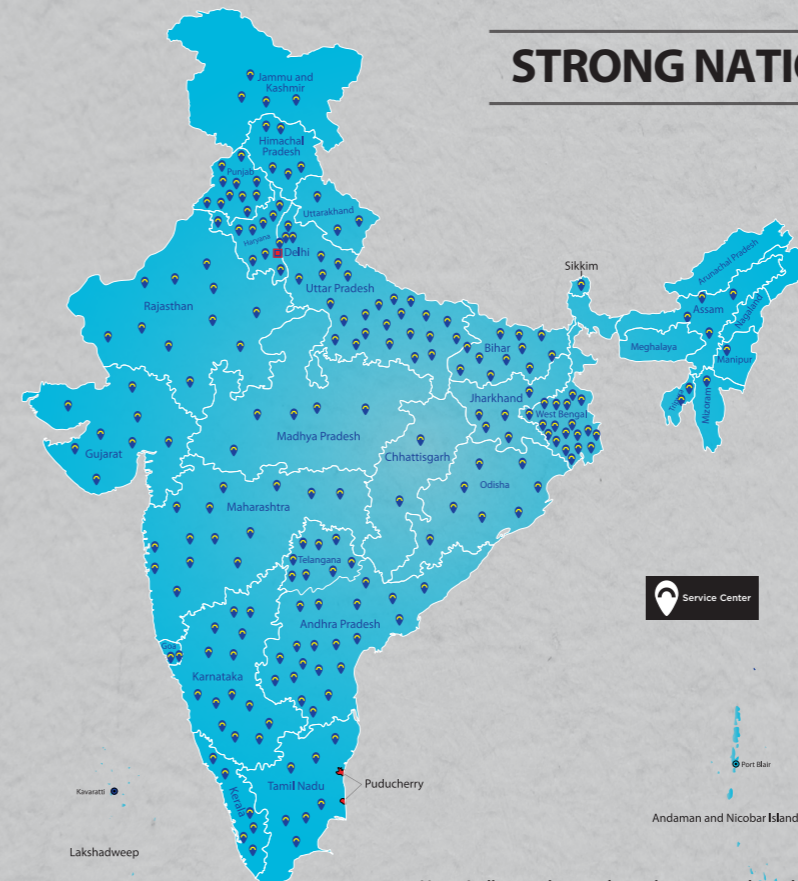
WARRANTY
 2 YEARS OVERALL

CHOOSING THE RIGHT WATER HEATER

CAPACITY	USAGE	FAMILY SIZE
1-3L	Kitchen/Wash Basin	2 Members
5-5.9L	Kitchen/Wash Basin/Bucket	3 Members
6L(Gas WH)	Kitchen/Bathroom/Bucket	4 Members
6L to 10L	Bathroom/Bucket	3 Members
15L to 25L	Bathroom/Shower/Bucket	4 Members
35L-50L	Bathroom/Shower/Bucket/Bath Tub	5 Members

Save Water !
At Hintastica Private Limited, we urge everyone to use water moderately and efficiently in order to conserve this precious natural resource and avoid water wastage.

STRONG NATIONWIDE SERVICE NETWORK



**Serving 5000+ cities,
12000+ Pin Codes Covered
Growing service network
day by day**

Note: India map image shown is not to scale and only for graphical representation of Hindware service network availability.

TECHNICAL SPECIFICATIONS



Parameter	Ondeo Evo i-Pro/ Ondeo Evo Digital			Alivio			Admiro		
	10	15	25	10	15	25	10	15	25
Capacity (Litre)	10	15	25	10	15	25	10	15	25
Mounting	V	V	V	V	V	V	V	V	V
Voltage (V) & Frequency (Hz)	230V, 50Hz, 1 Phase AC								
Power (Watts)	2000	2500	2500	2000	2500	2500	2000	2000	2000
Current (Ampere)	8.7	10.9	10.9	8.7	10.9	10.9	8.7	10.9	10.9
Pressure (MPa)	0.80	0.80	0.80	0.80	0.80	0.80	0.80	0.80	0.80
Standing Loss (KWH/24hrs)	0.36	0.42	0.51	0.36	0.42	0.51	0.36	0.42	0.51
Max Hot Water Output (°C)	75 ± 5	75 ± 5	75 ± 5	75 ± 5	75 ± 5	75 ± 5	75 ± 5	75 ± 5	75 ± 5
Net Weight (Kg)	7.4	8.5	12.1	7.0	8.0	11.5	8.7	12.6	13.3
Dimension WxDxH (mm)	367x316x396	367x359x396	446x410x473	367x328x396	367x371x396	446x416x473	380x380x322	400x400x377	480x480x400
Class of Appliance	Class I	Class I	Class I	Class I	Class I	Class I	Class I	Class I	Class I
Ingress Protection	IP24	IP24	IP24	IP24	IP24	IP24	IPX4	IPX4	IPX4

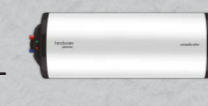


Parameter	Fraisio Digi			Nitro		Amour Neo			
	10	15	25	15	25	10	15	25	
Capacity (Litre)	10	15	25	15	25	10	15	25	
Mounting	V	V	V	V	V	V	V	V	
Voltage (V) & Frequency (Hz)	230V, 50Hz, 1 Phase AC								
Power (Watts)	2000	2000	2000	2000	2000	2000	2000	2000	
Current (Ampere)	8.7	8.7	8.7	8.7	8.7	8.7	8.7	8.7	
Pressure (MPa)	0.80	0.80	0.80	0.80	0.80	0.80	0.80	0.80	
Standing Loss (KWH/24hrs)	0.36	0.42	0.51	0.36	0.42	0.36	0.42	0.51	
Max Hot Water Output (°C)	75 ± 5	75 ± 5	75 ± 5	75 ± 5	75 ± 5	75 ± 5	75 ± 5	75 ± 5	
Net Weight (Kg)	8.4	10.5	14.3	10.5	14	8.1	9.6	11.1	
Dimension WxDxH (mm)	290x320x485	330x345x510	370x400x600	325x335x520	366x376x575	327x336x410	327x336x514	371x382x561	
Class of Appliance	Class I	Class I	Class I	Class I	Class I	Class I	Class I	Class I	
Ingress Protection	IP24	IP24	IP24	IP24	IP24	IP24	IP24	IP24	

TECHNICAL SPECIFICATIONS



Parameter	Admiro Eco			Elicio Neo		Ezro Neo	
	10	15	25	35	50	35	50
Capacity (Litre)	10	15	25	35	50	35	50
Mounting	V	V	V	V	V	V	V
Voltage (V) & Frequency (Hz)	230V, 50Hz, 1 Phase AC						
Power (Watts)	2000	2000	2000	2000	2000	2000	2000
Current (Ampere)	8.7	8.7	8.7	8.7	8.7	8.7	8.7
Pressure (MPa)	0.80	0.80	0.80	0.80	0.80	0.80	0.80
Standing Loss (KWH/24hrs)	0.36	0.42	0.51	0.36	0.42	0.42	0.51
Max Hot Water Output (°C)	75 ± 5	75 ± 5	75 ± 5	75 ± 5	75 ± 5	75 ± 5	75 ± 5
Net Weight (Kg)	7.6	9.1	10.6	14.7	16.7	14.7	16.7
Dimension WxDxH (mm)	321x329x413	321x329x518	365x373x564	370x393x711	471x493x632	379x388x708	479x487x630
Class of Appliance	Class I	Class I	Class I	Class I	Class I	Class I	Class I
Ingress Protection	IP24	IP24	IP24	IP24	IP24	IP24	IP24



Parameter	Cristallo Slim			Evano			Helio	Aquajoy	
	10	15	25	15	25	50	3	3	5.5
Capacity (Litre)	10	15	25	15	25	50	3	3	5.5
Mounting	H	H	H	H	H	H	V	V	V
Voltage (V) & Frequency (Hz)	230V, 50Hz, 1 Phase AC						220-240V, 50Hz, AC		
Power (Watts)	2000	2000	2000	2000	2000	2000	3000	3000	3000
Current (Ampere)	8.7	8.7	8.7	8.7	8.7	8.7	13	13	13
Pressure (MPa)	0.80	0.80	0.80	0.50	0.80	0.80	0.65	0.65	0.65
Standing Loss (KWH/24hrs)	0.43	0.50	0.60	0.50	0.61	0.81	NA	NA	NA
Max Hot Water Output (°C)	75 ± 5	75 ± 5	75 ± 5	75 ± 5	75 ± 5	75 ± 5	75 ± 5	75 ± 5	75 ± 5
Net Weight (Kg)	7.2	8.5	12.5	9.5	10.2	18.5	2.2	2.4	3.1
Dimension WxDxH (mm)	455x350x330	535x340x325	900x340x325	430x335x355	545x380x400	780x400x465	220x190x350	202x190x360	242x195x425
Class of Appliance	Class I	Class I	Class I	Class I	Class I	Class I	Class I	Class I	Class I
Ingress Protection	IPX2	IPX2	IPX2	IPX2	IPX2	IPX2	IPX1	IPX1	IPX1